



Steering Box Order Form

Ratio: 6 to 1 or 8 to 1 (slowest)

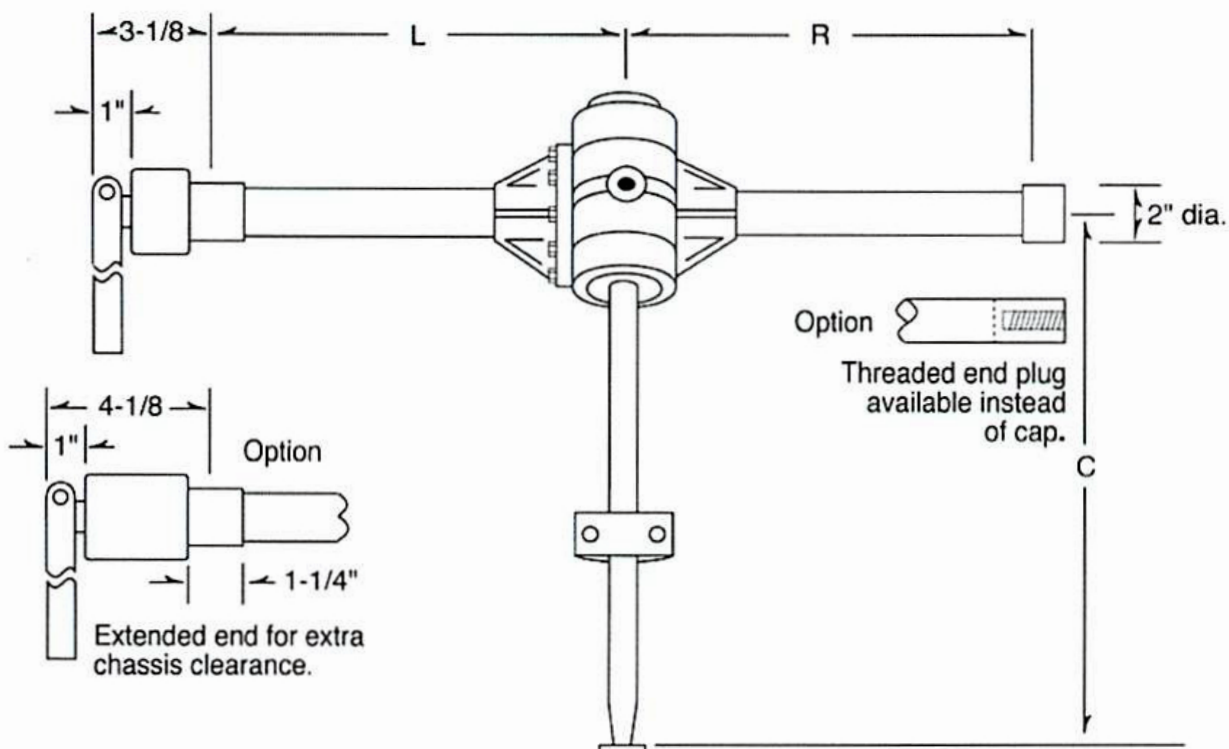
C dimension: Standard sizes 6 to 15 inches in 1 inch increments, 17", 20", 22" and 24",
or 3/4x48 spline for boat applications.

L dimension: Standard sizes 8 to 15 inches in 1 inch increments.

☺ of column shaft to center of clamp,
shaft side.

R dimension: Any length available.

Position of worm gear (column shaft):
front or back of cross tube.



Name: _____

Address: _____

Phone: _____